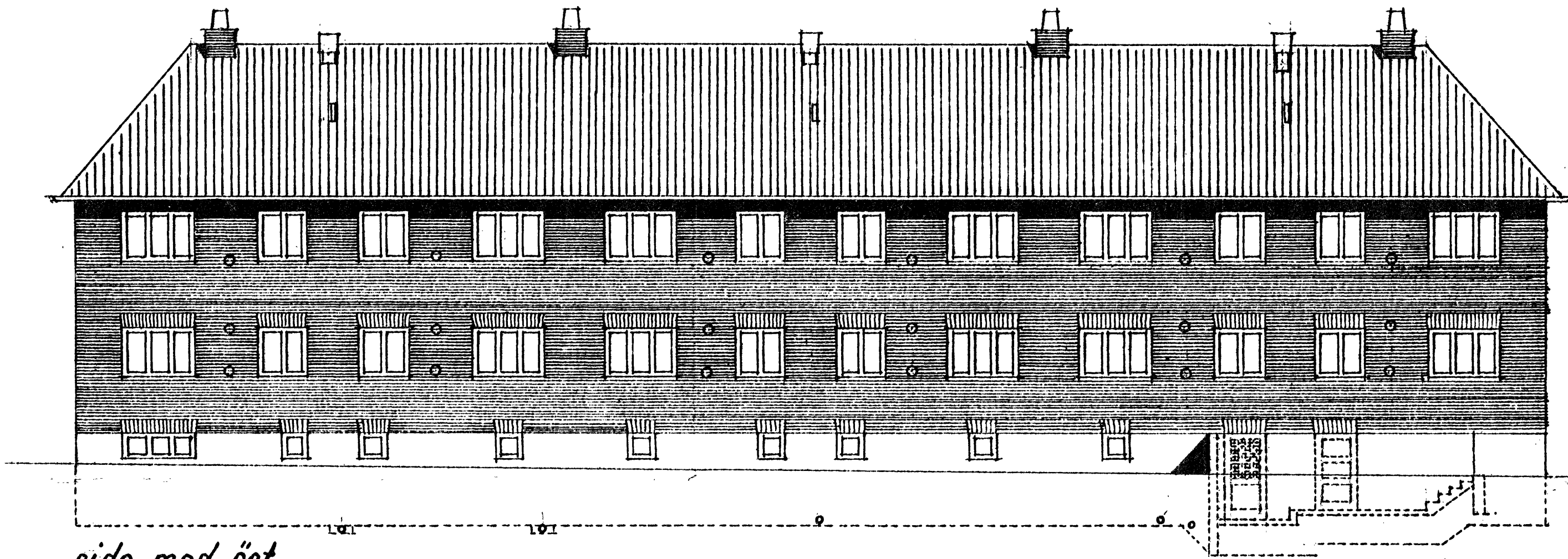


BEBYGGELSE PAA SKELTOFTEVEJ

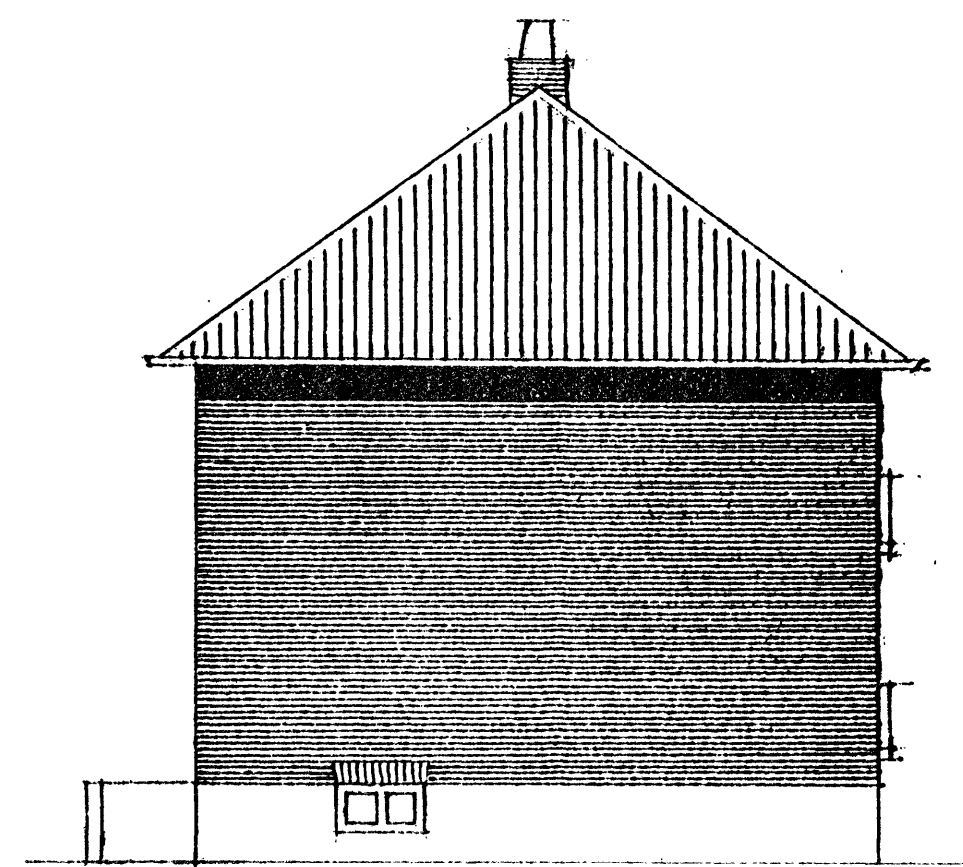
matr 19^{aa} og matr. 19^d af Lyngby by. Christians Sogn.

type B blok 7.

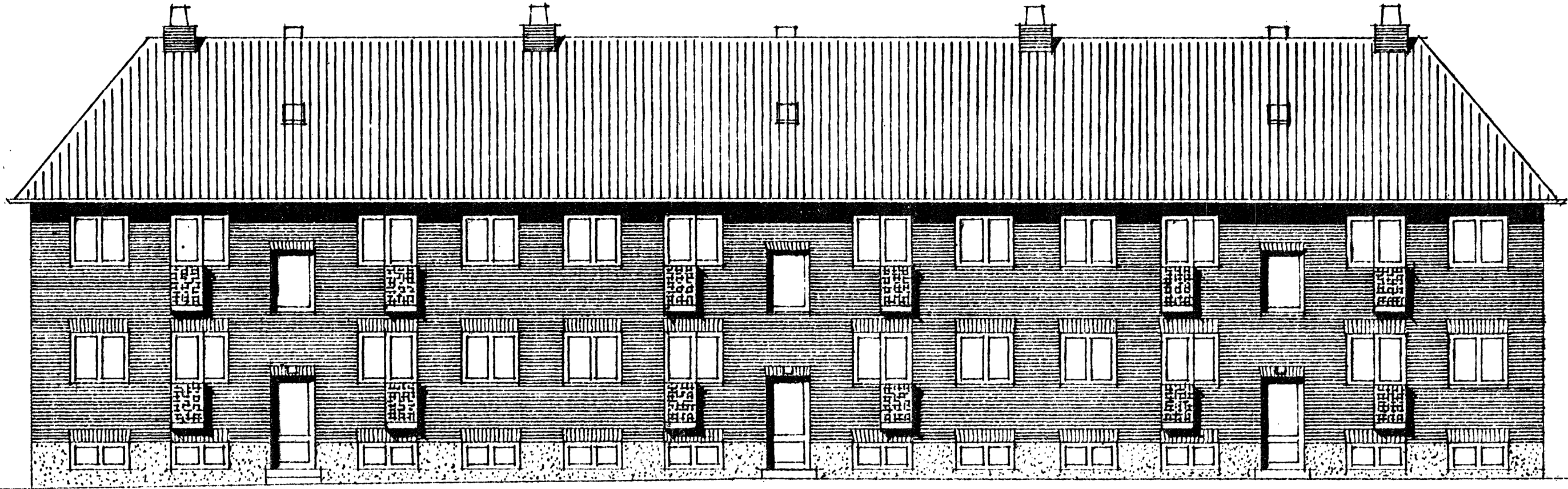
Henhører til Approbationskrivelse af 3/7.49
for Bygningsinspektøren for Lyngby.



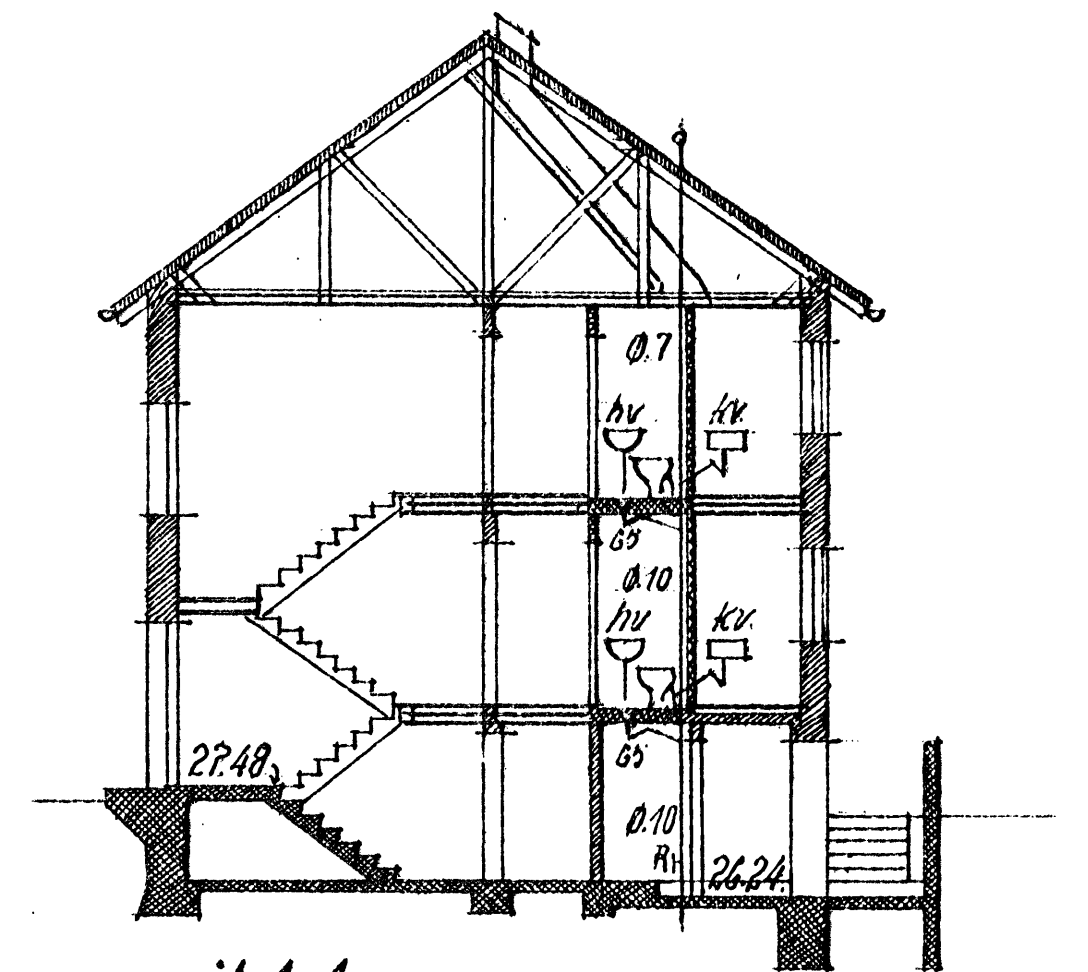
side mod øst.



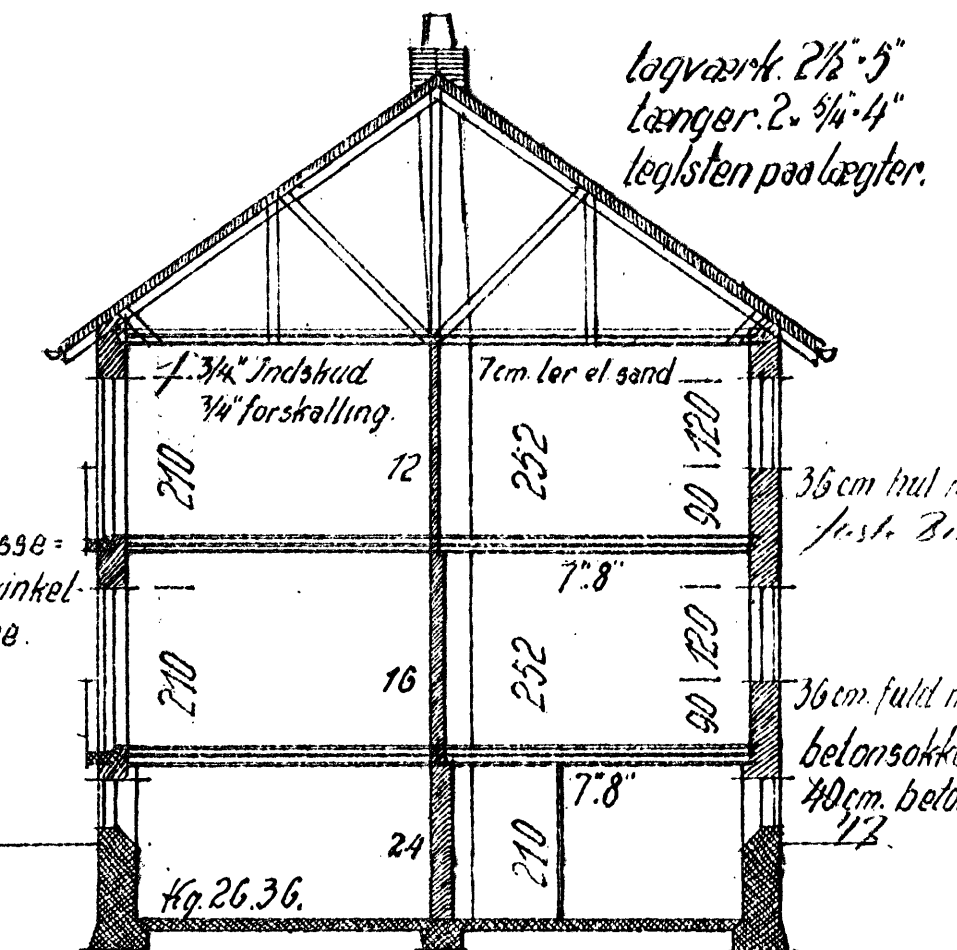
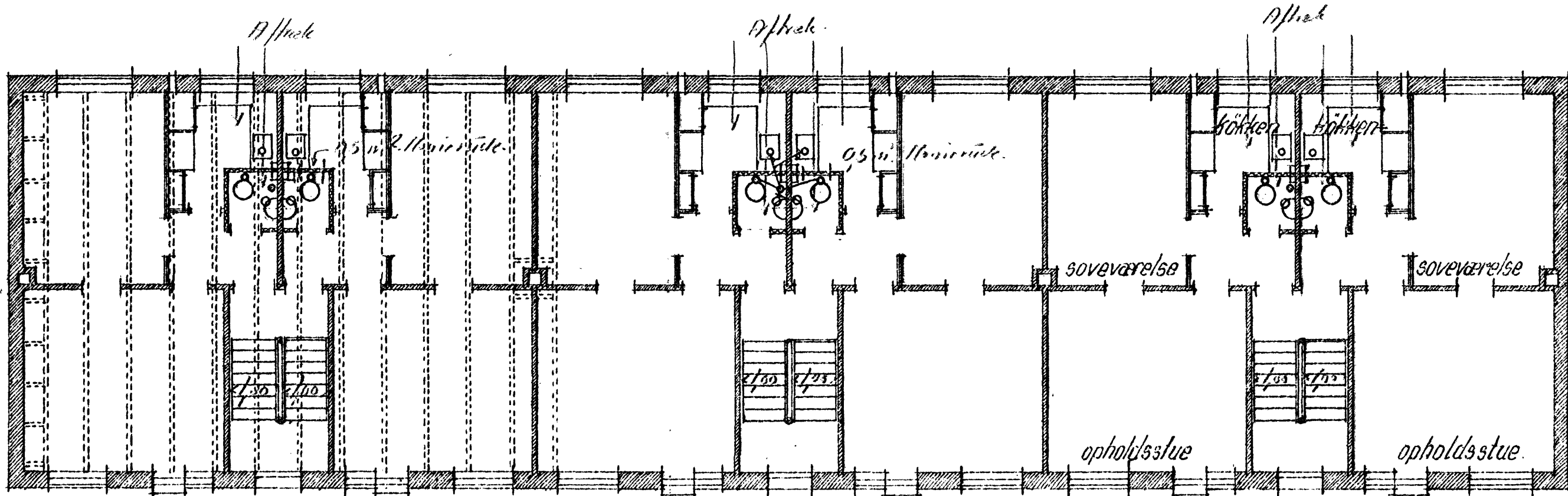
gaul



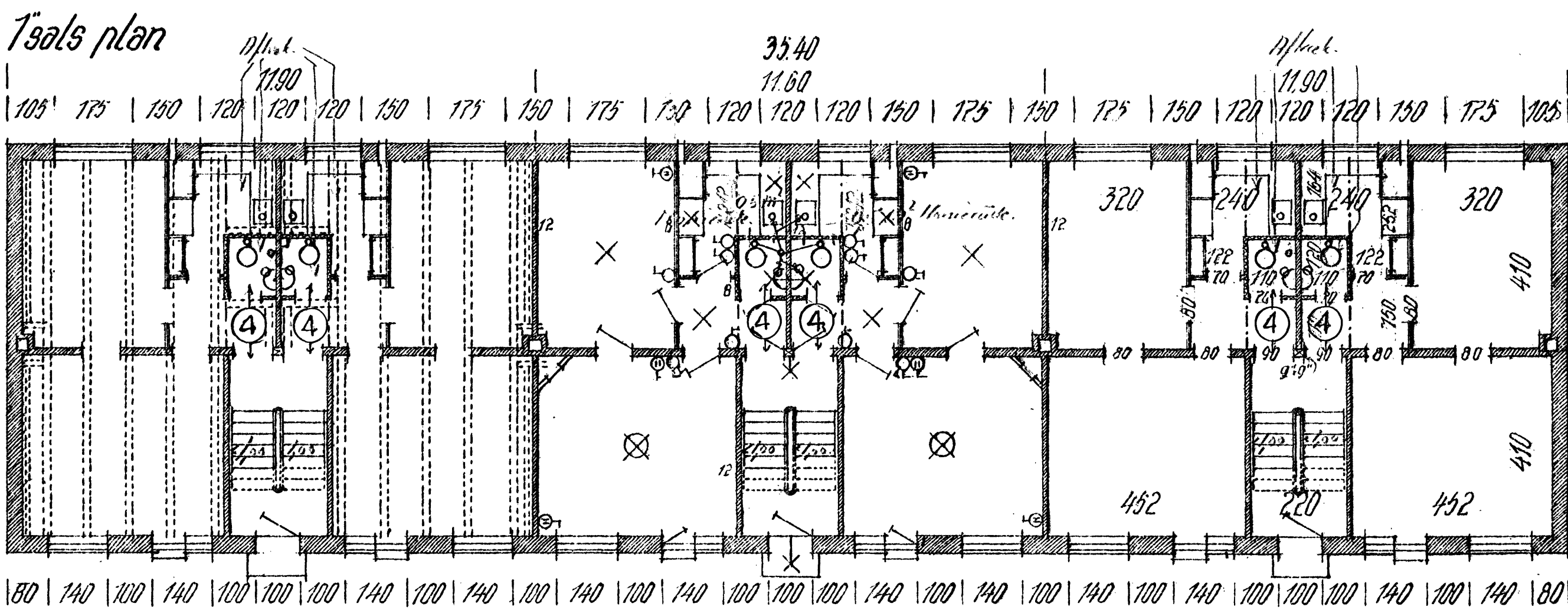
side mod vest.



snit A-A.

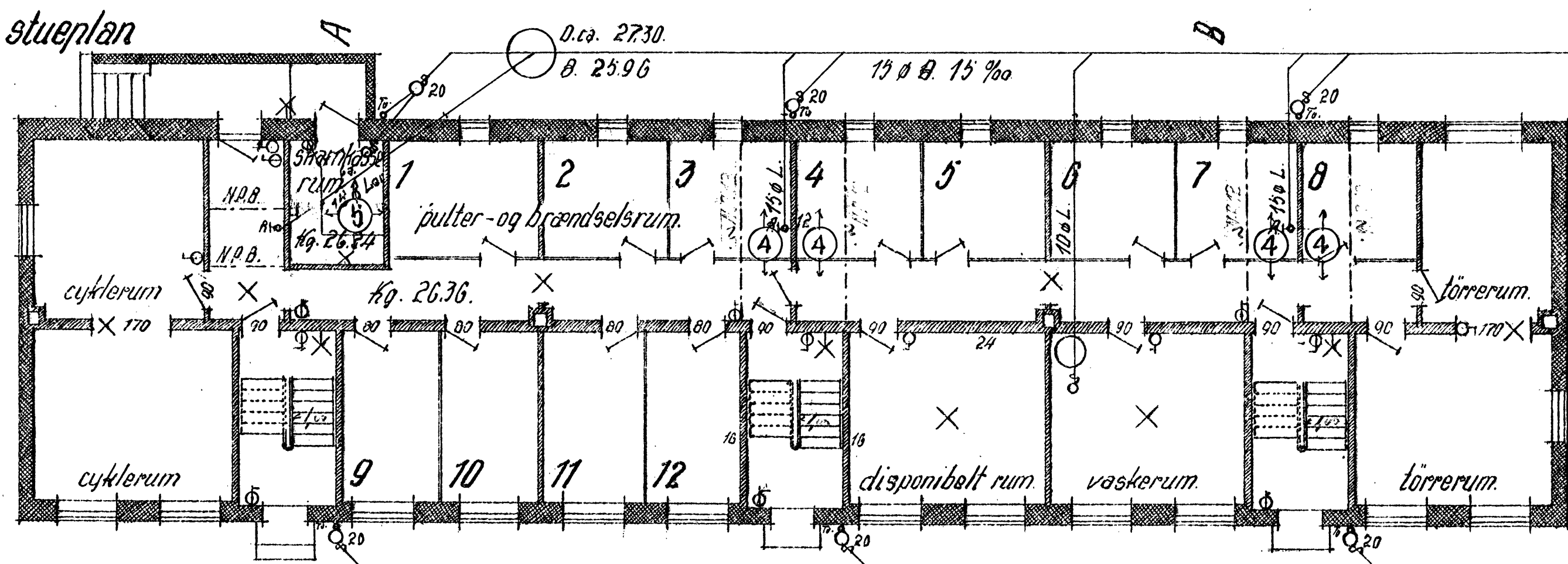


snit B-B.



D. ca. 27.50
B. 23.58.

$35.40 \times 9.08 = 321 \text{ m}^2$



D. ca. 27.50
B. 23.81.

arealer:	
bebygget areal:	321,93 m ²
elageareal:	642,88
kubikindhold:	3049,00 m ³
lejlighedstype:	
2 værelser	12 stk a. 53,57 m ²

Januar -43. Arne Paulsen arkitekt
tegnstue: høstvej 4 Lyngby
Lyngby 617.

type B blok 7.

