

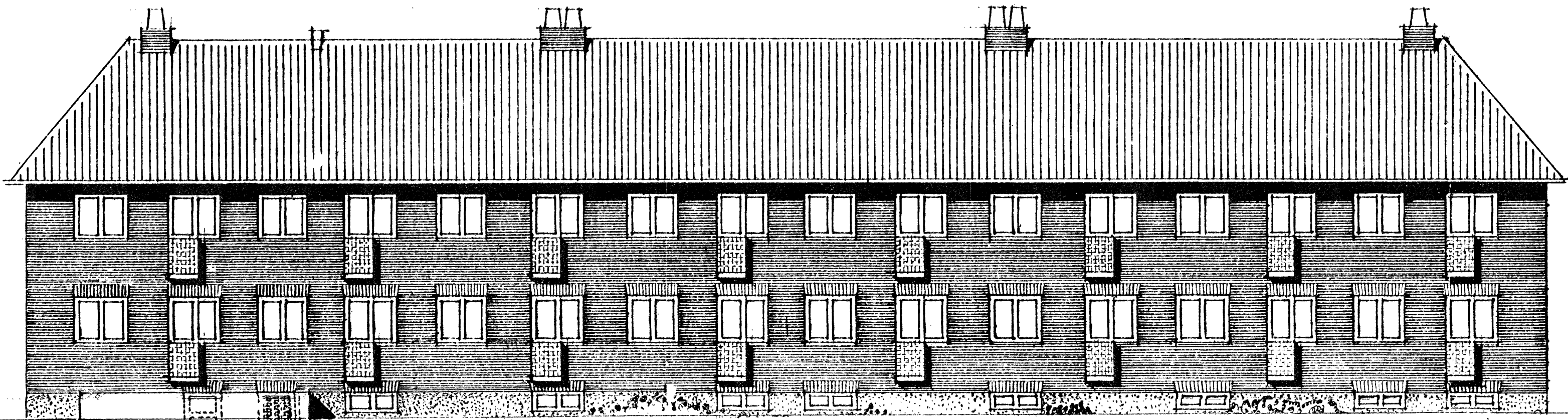
BEBYGGELSE PAA SKELTOFTEVEJ

matr. 19^{aa} og matr. 19^d af Lyngby by Christians Sogn.

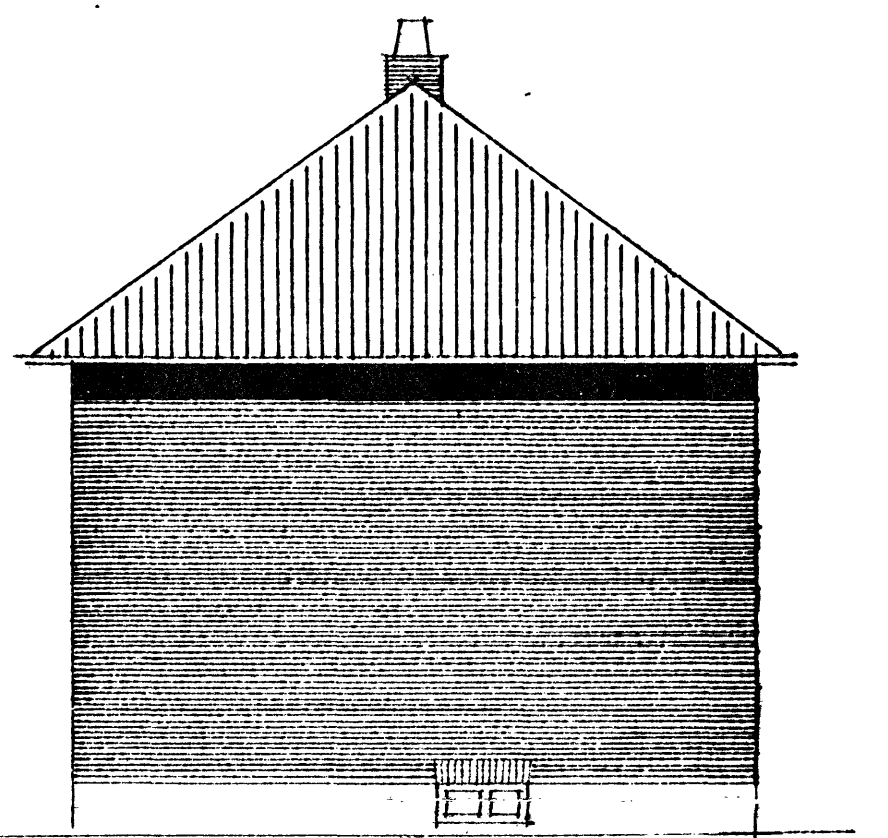
type A blok 2.

31493

anmoder til Approbationskrævelse af...
for Bygningsinspektøren for Lyngby-Tårn

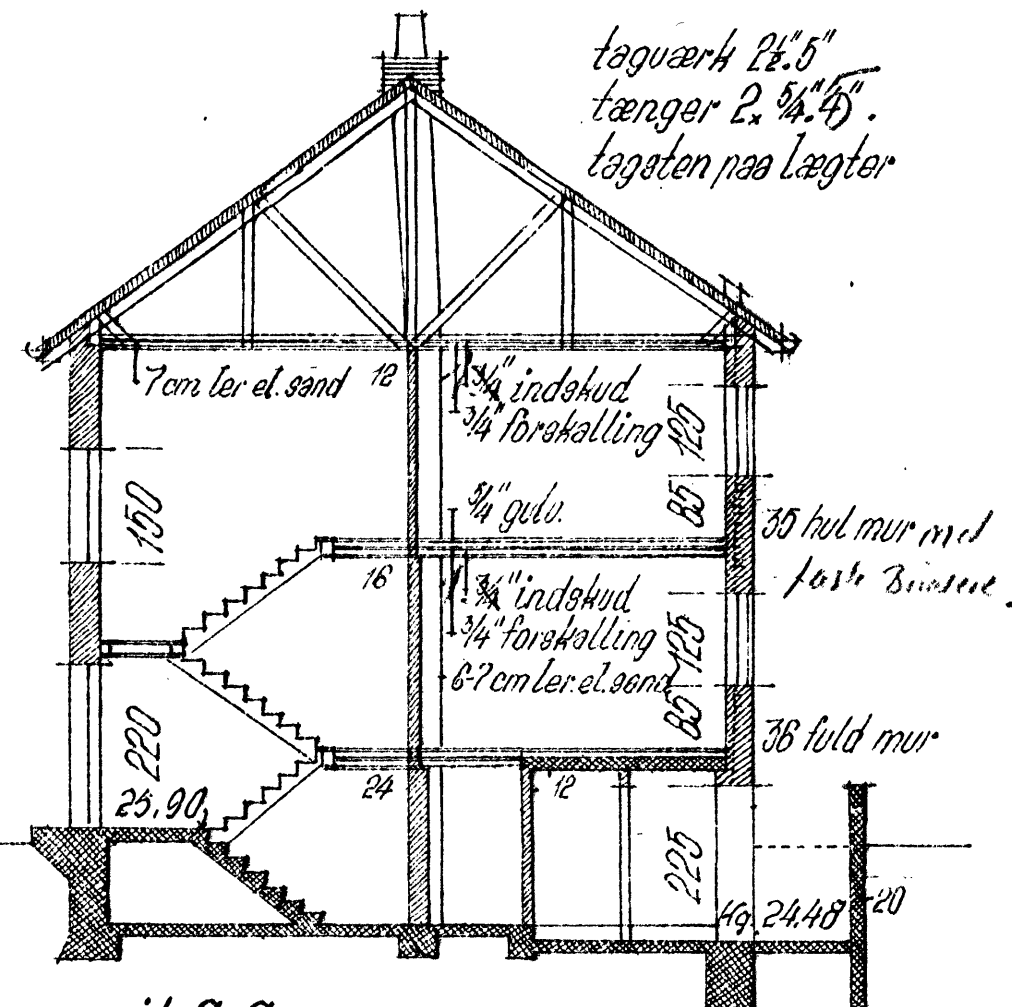
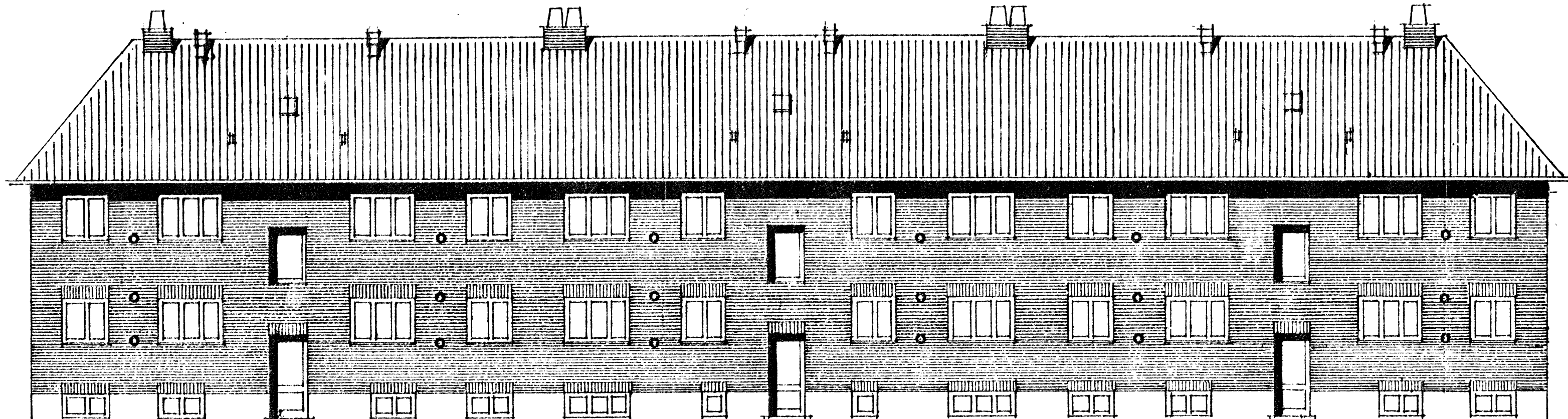


side mod vest

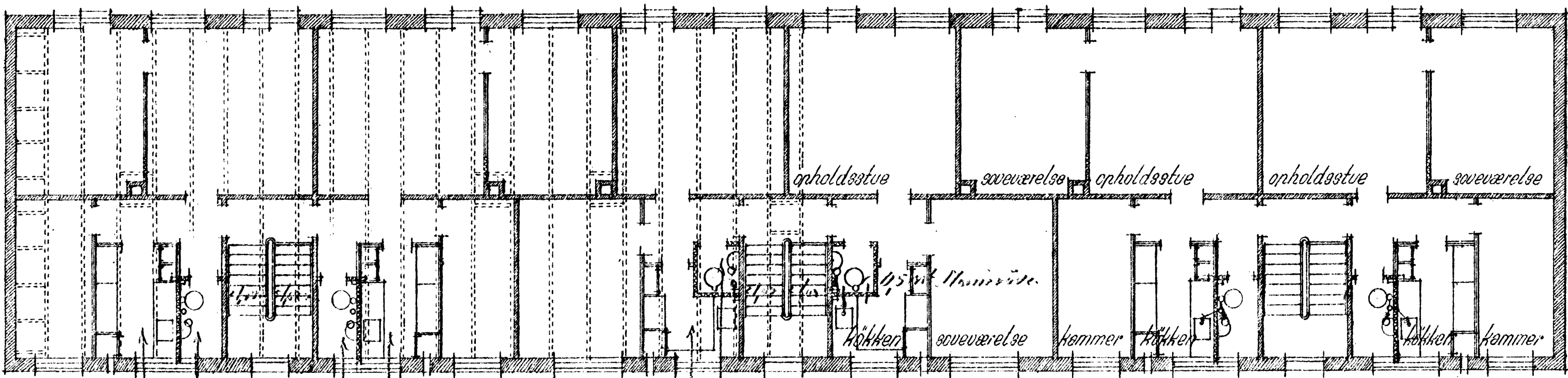


side mod øst

gavl

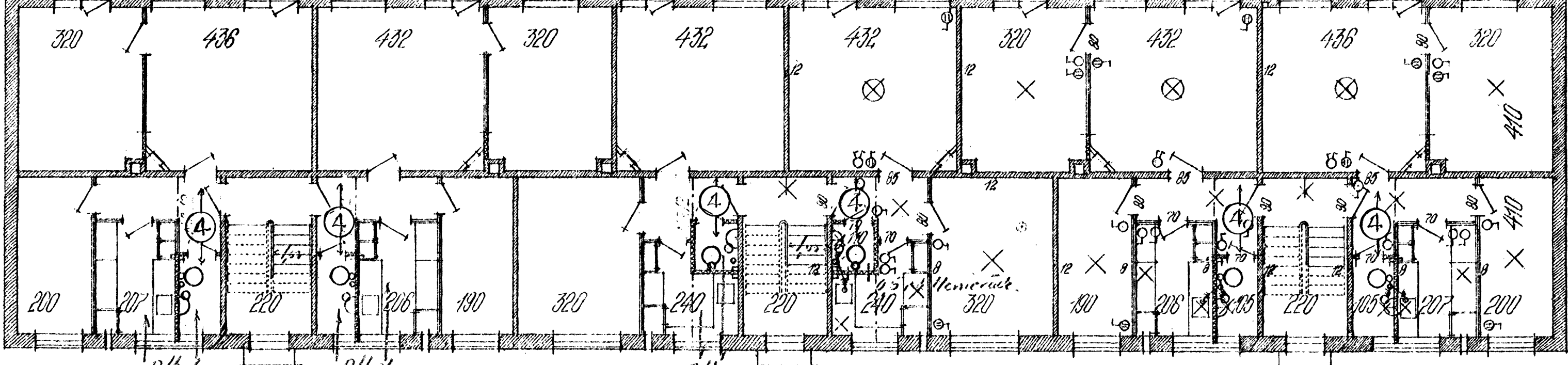
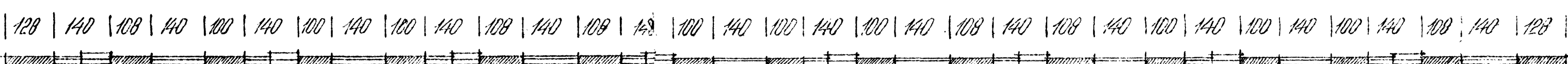


snit C-C

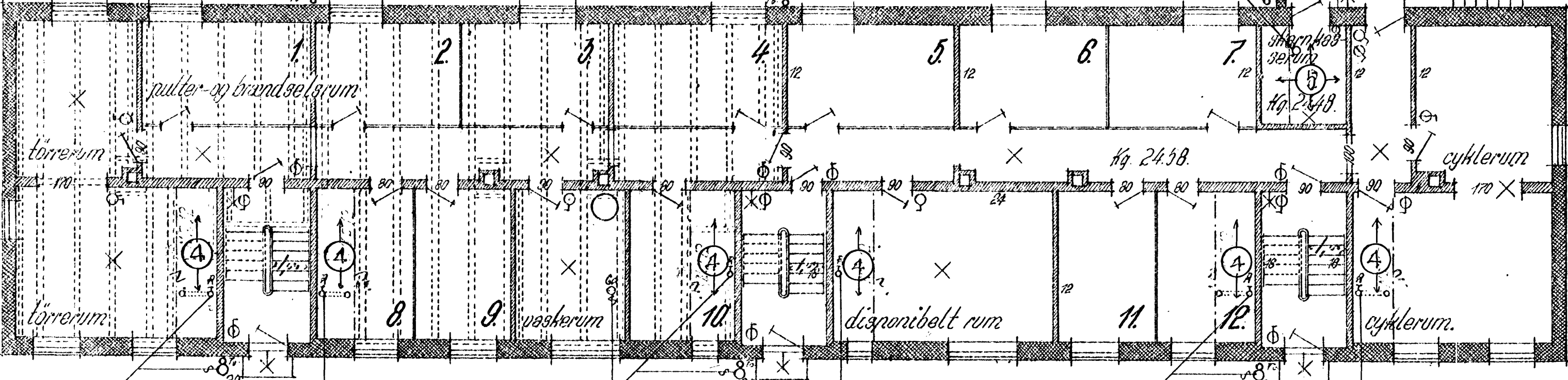
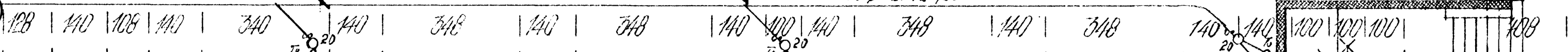


1. etage plan

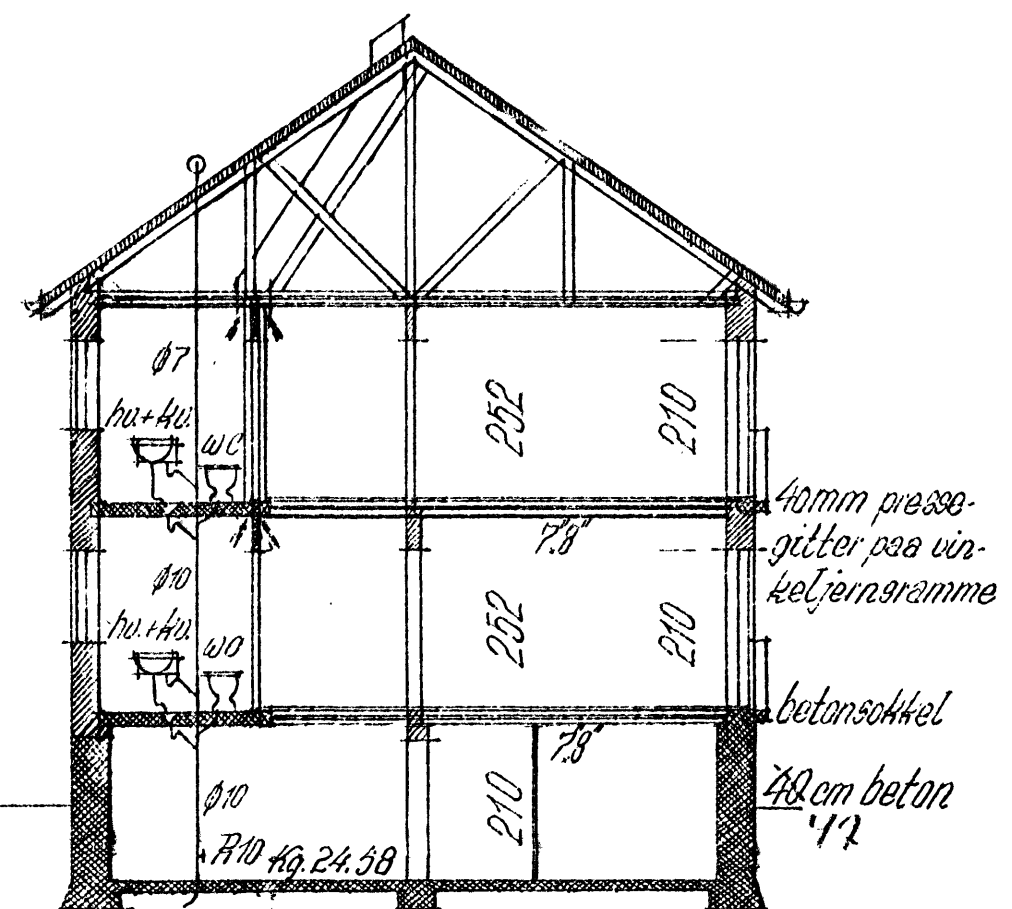
40.44



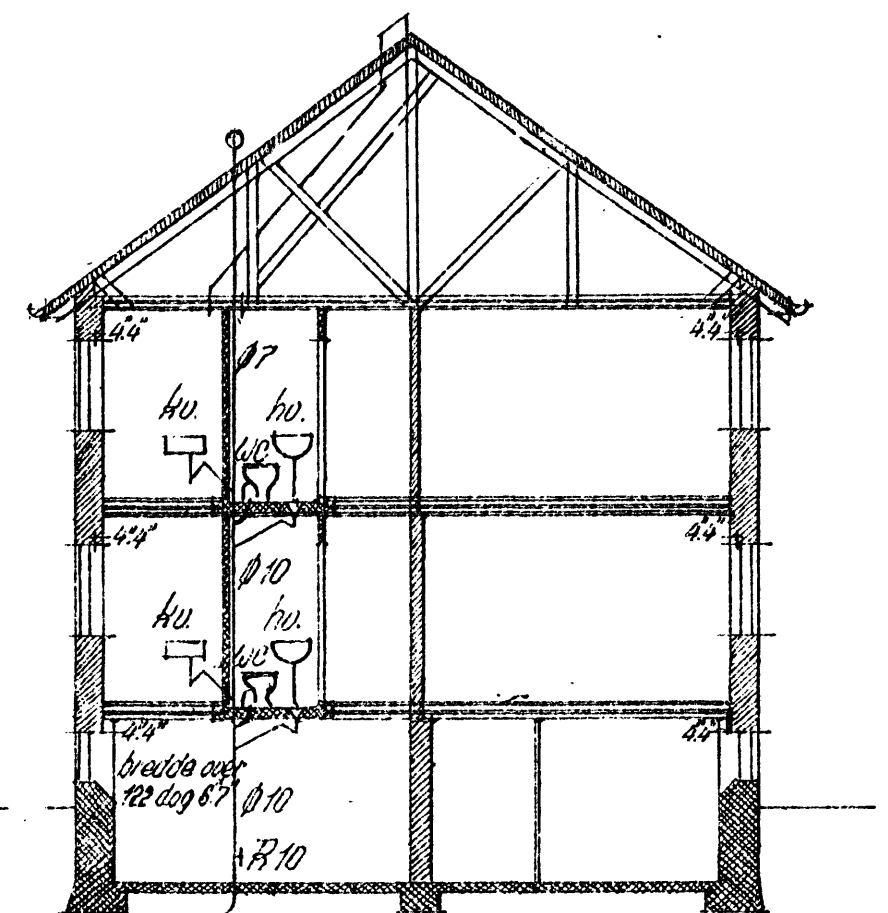
2. etage plan



kælderplan



snit A-A



snit B-B

- arealer:
- bebbygget areal: 387,20 m²
 - atsogearaal: 734,40 -
 - kubikindhold: 3488,00 m³
 - lejlighedstyper:
 - 2 værelser 4 stk a. 52,00 m²
 - 2 - +kammer 4 - - 66,90 -
 - 2 - - - 4 - - 64,70 -

Januar 43. Arne Paulsen arkitekt.
Egnetative: Postvej 4, Lyngby,
Lyngby 617

type A blok 2.

